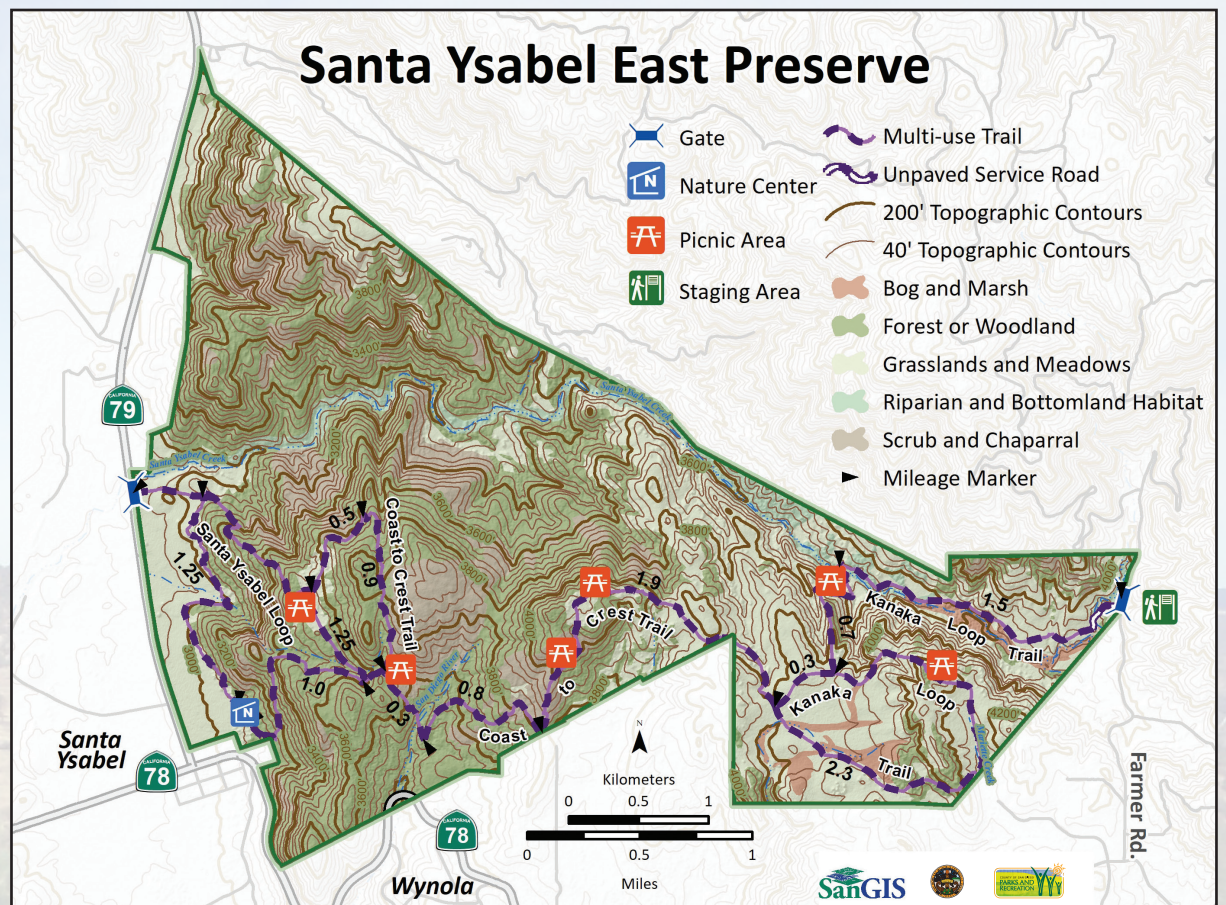


# SANTA YSABEL NATURE CENTER AND EAST PRESERVE



## Santa Ysabel East Preserve

East Gate: 500 Farmer Road, Julian, CA 92036  
West Gate: 22550 Highway 79, Santa Ysabel, CA 92070

Hours: 8 a.m. to sunset, 7 days a week

Oak woodlands, native grasslands and fields of wildflowers are some of the settings you'll experience during your hiking, biking and riding adventures within the boundaries of this 4,600-acre preserve.

More than 15 miles of multi-use trails wind through various habitats in this scenic mountain preserve.

Please stay out of the creek and closed areas of the preserve.

During your visit, you may see hawks, eagles, snakes, lizards, or maybe even a coyote or bobcat.

During heavy rainstorms, the preserve may be closed due to hazardous trail conditions.

Dogs are permitted provided they are on a leash.

## Santa Ysabel Nature Center

22135 Highway 79, Santa Ysabel, CA 92070

Hours: Nov. 1– March 31

Monday – Thursday, 10 a.m. – 5 p.m.  
Friday – Sunday, 9 a.m. – 5 p.m.

Hours: April 1– Oct. 31

Monday – Thursday, 10 a.m. – 6 p.m.  
Friday – Sunday, 9 a.m. – 7 p.m.

The Santa Ysabel Nature Center is a 6,000 square-foot, LEED Gold and Zero Net Energy facility, serving nature enthusiasts who wish to learn about the area's ecology, natural, and cultural history.

The nature center includes interpretive and educational exhibits, interactive displays, and a conference room for up to 100 people. An outdoor patio and amphitheater are also available for group activities.

